

acrobat

LED Downlight



A balance of function and form



WET
LOCATION

WARM
DIM

CCEA
APPROVED

5 YEAR
LIMITED WARRANTY



acrobat™ family of products are designed and built exclusively by CSL in the USA.

A Division of Troy-CSL Lighting, Inc.

14508 Nelson Avenue • City of Industry, CA 91744 • Phone: 626.336.4511 • Fax: 626.330.4266

www.csllighting.com

Copyright ©2019 Troy-CSL Lighting, Inc.





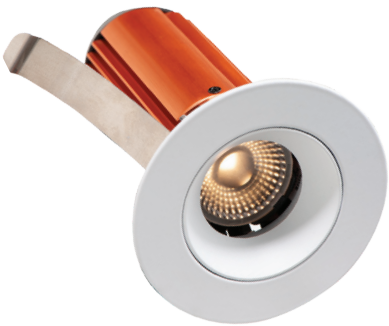
KEY FEATURES

- LED module and trim installed after ceiling is complete.
- Very precise 45° of adjustment.
- Knife-edge trims are architecturally driven. Precise fit between trim opening and optic dimension. Cannot see internal components of downlight from below ceiling.
- Shallow plenum downlights at 2 1/2" with 45° adjustable beam option.
- Accepts two media options.
- Warm dim and tunable white options available along with wall wash.

Commercial/Residential
New Construction/Remodel

Project Applications:

Corridors
Conference Rooms
Offices
Lobbies
Kitchens
Balconies
Bathrooms
Bedrooms

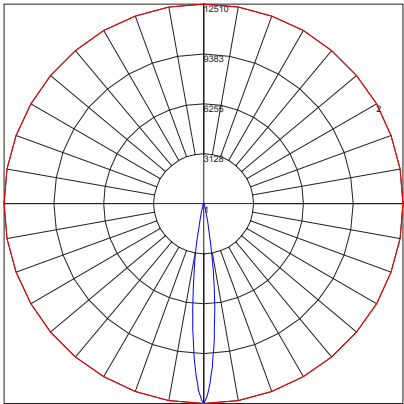


Photometrics

Acrobat 2" / 3000K / 20W / Round Trim Fixture / Optic 10°

Model #: A2-1R-WH-0
Report #: L101806101
Delivered Lumens: 849
Input Watts: 19.63W
Efficacy: 43
Power Factor: 0.9857
Total Harmonic Distortion: 12.6%
CCT: 2921
CRI: 91.70
Max Candela: 12,510 @ 0° from Vertical
Spacing Criterion (0-180): 0.22
Spacing Criterion (90-270): 0.22
Spacing Criterion (diagonal): 0.24

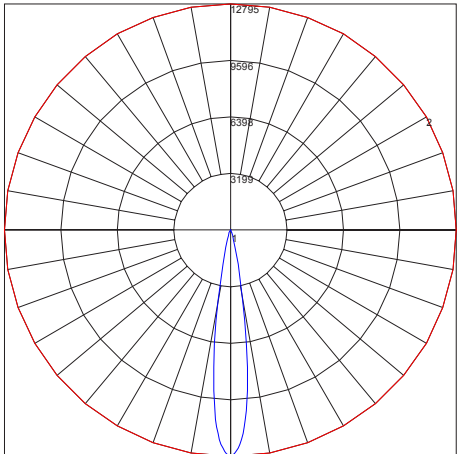
R Values	
R1	91.60
R2	94.61
R3	96.40
R4	92.37
R5	91.19
R6	93.45
R7	92.62
R8	81.46
R9	57.52
R10	86.65
R11	92.74
R12	78.88
R13	92.23
R14	97.22
R15	87.77



Acrobat 3" / 3000K / 20W / Round Trim Fixture / Optic 10°

Model #: A3-1R-WH-0
Report #: L101806103
Delivered Lumens: 1247
Input Watts: 25.71W
Efficacy: 48
Power Factor: 0.9914
Total Harmonic Distortion: 8.8%
CCT: 2996
CRI: 93.70
Max Candela: 12,795 @ 0° from Vertical
Spacing Criterion (0-180): 0.28
Spacing Criterion (90-270): 0.28
Spacing Criterion (diagonal): 0.28

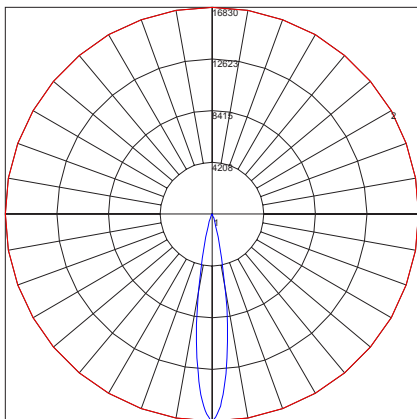
R Values	
R1	94.04
R2	97.75
R3	98.97
R4	93.19
R5	93.88
R6	97.07
R7	91.94
R8	83.12
R9	63.66
R10	93.62
R11	93.97
R12	83.23
R13	95.22
R14	99.23
R15	90.28



Acrobat 4" / 3000K / 20W / Round Trim Fixture / Optic 10°

Model #: A4-1R-WH-0
Report #: L101806105
Delivered Lumens: 1865
Input Watts: 38.36W
Efficacy: 49
Power Factor: 0.9905
Total Harmonic Distortion: 13.2%
CCT: 2971
CRI: 92.8
Max Candela: 16,830 @ 0° from Vertical
Spacing Criterion (0-180): 0.30
Spacing Criterion (90-270): 0.30
Spacing Criterion (diagonal): 0.30

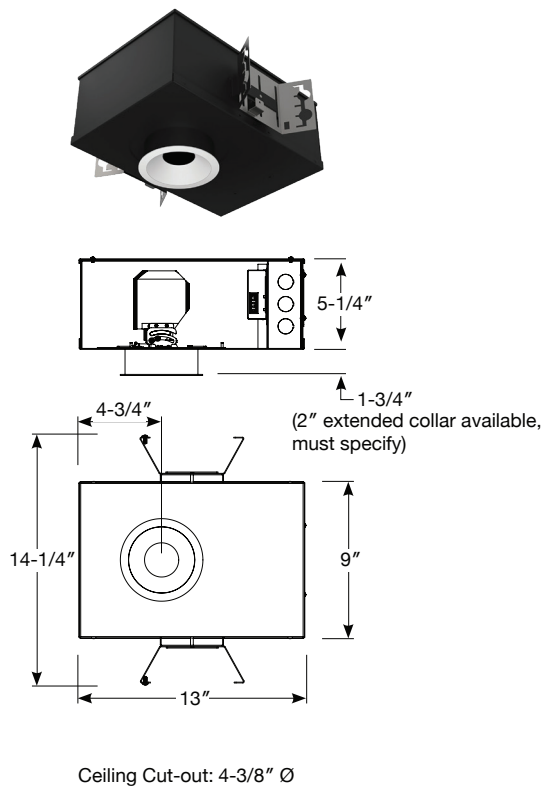
R Values	
R1	92.75
R2	96.52
R3	98.64
R4	92.51
R5	92.57
R6	95.97
R7	91.84
R8	81.55
R9	59.31
R10	90.92
R11	93.06
R12	81.85
R13	93.81
R14	98.68
R15	88.78



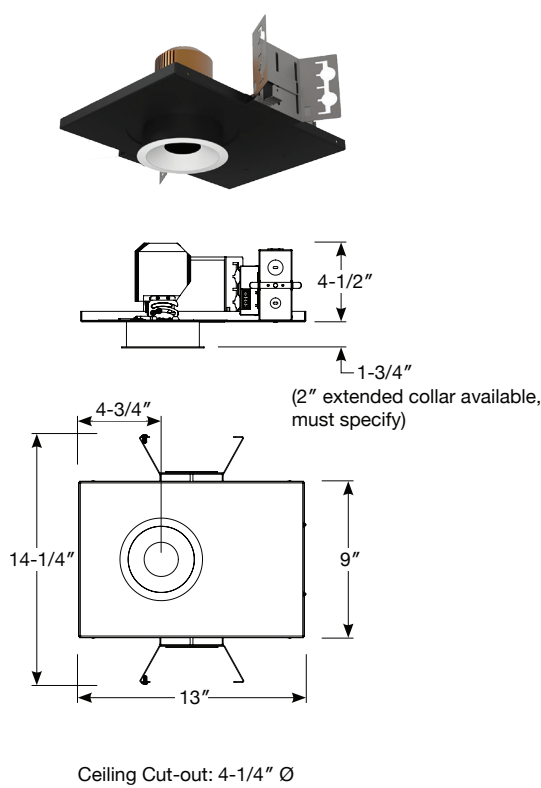
Housings

All examples show 3" acrobat LED downlight with round trim.

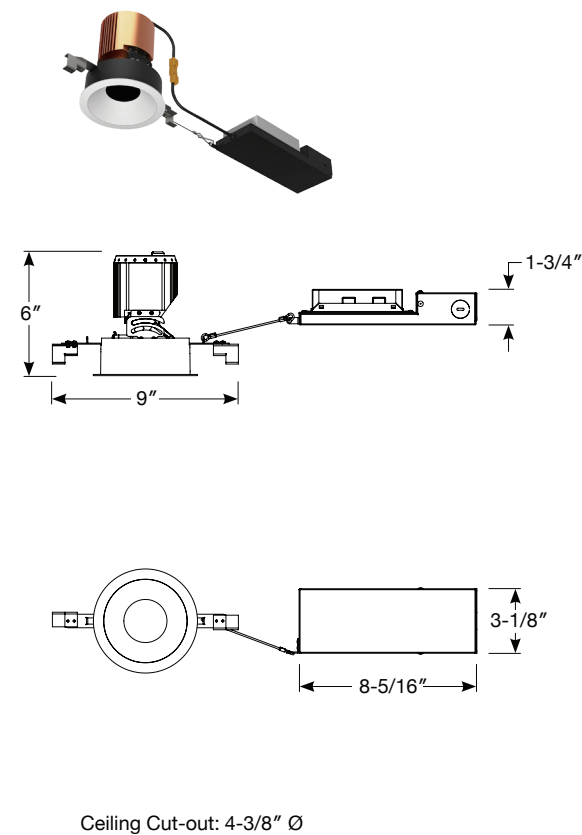
IC/CCEA New Construction



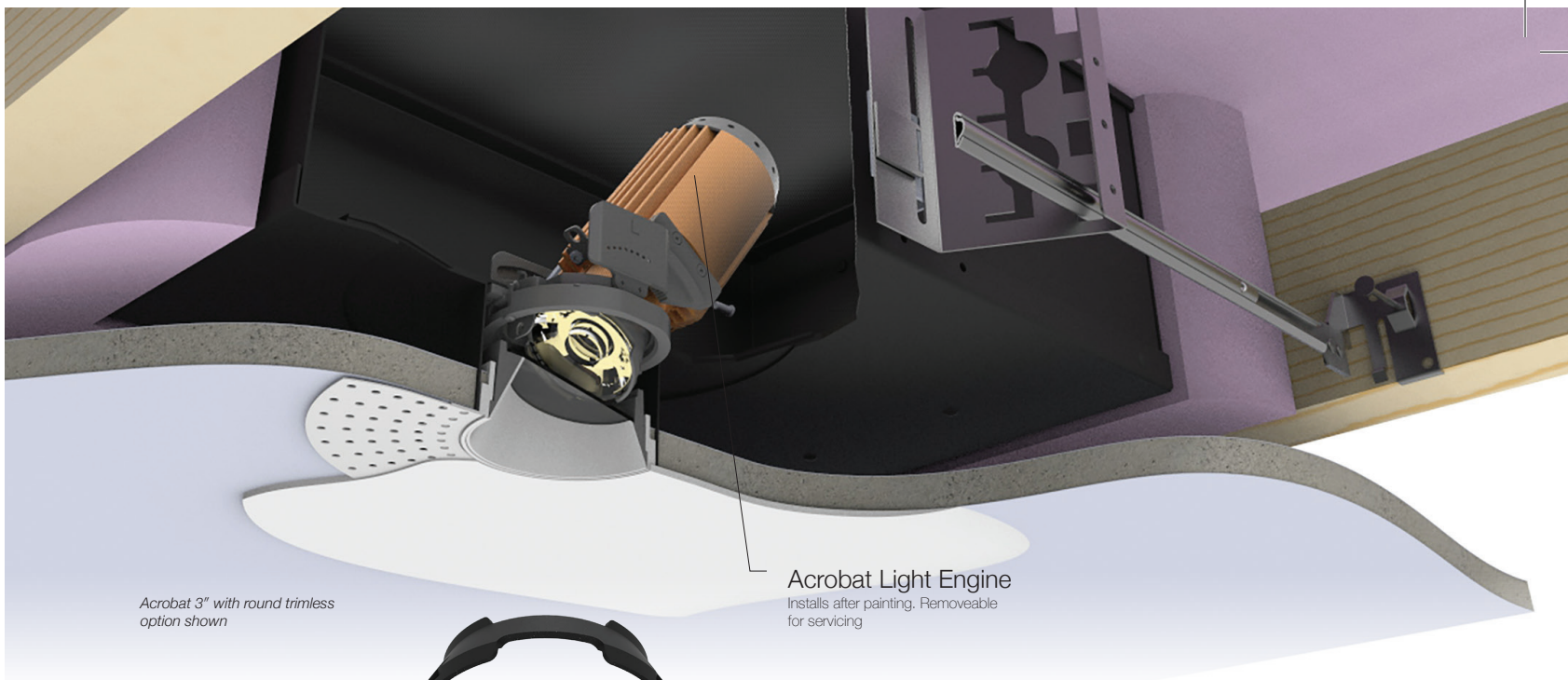
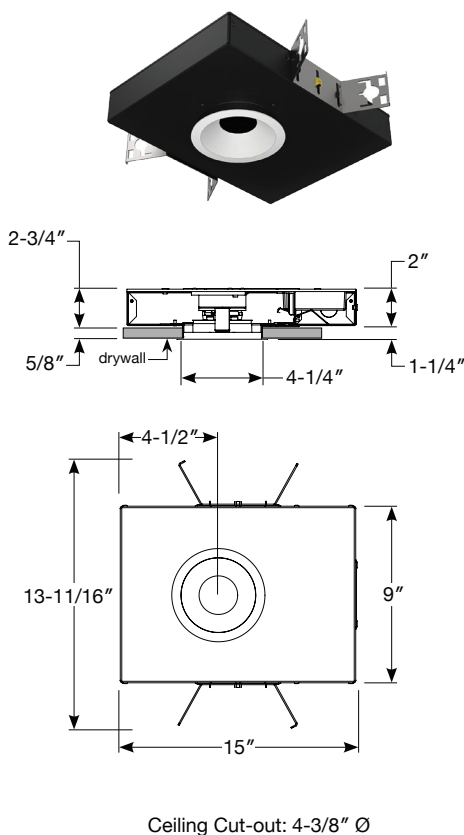
Non-IC New Construction



Remodel



IC/CCEA Shallow New Construction

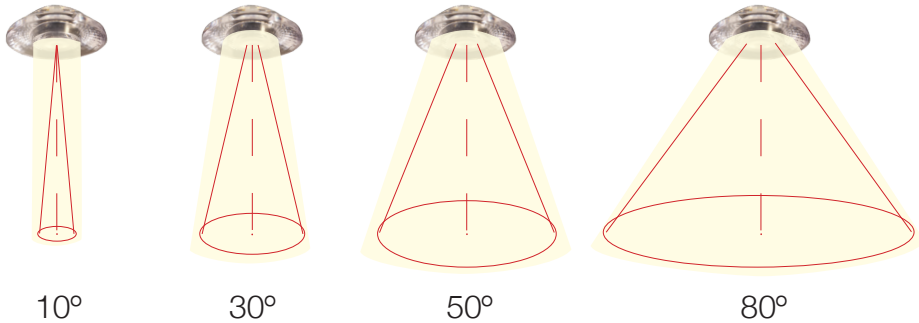


Balancing Act

Our Acrobat family of 1", 2", 3", and 4" LED downlights are the perfect balance of function and form. The unique copper-colored extruded aluminum heat sink minimizes LED temperatures for longer service life. Quality optics reflect and refract the light in four different beam spreads: spot, narrow, flood, and wide flood; while the optional accessories give you added control or diffusion. Both are field interchangeable.

Acrobat offers precise, effortless hot aiming from below the ceiling -up to 15° tilt for 1" Acrobat, up to 35° tilt for 2" Acrobat, or up to 40° tilt for 3" and 4" Acrobat. To fine-tune the direction of the light, simply pull the trim and optic out of the fixture to adjust.

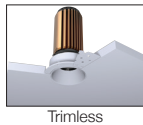
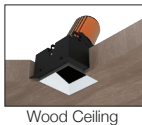
Optics available:



Flexibility

The CSL acrobat family gives you a variety of options. 1", 2", 3", or 4" Acrobat LED Downlights are offered in round and square apertures that perform as downlight, adjustable, baffle, pinhole and wall wash trim types. From the 15W 1" acrobat up to 35W 4" acrobat, they are available in warm dimming and color tune. Acrobat is the perfect LED downlight choice for your new or remodel housing projects.


				
Aperture Size	1"	2"	3"	4"
Max. Lumens Delivered	1163lm	1406lm	1907lm	2696lm
Max. Wattage Option	15W	20W	25W	35W
Adjustability	tilt up to 15° pan 360°	tilt up to 35° pan 360°	tilt up to 40° pan 360°	tilt up to 40° pan 360°
Four Optical Distributions 10°, 30°, 50°, 80°	•	•	•	•
IC Air Tight IC/Chicago Plenum	•	•	•	•
Non-IC New Construction	•	•	•	•
Shallow Housing	•	•	•	•
Remodel Housing	•	•	•	•
Downlight	•	•	•	•
Baffle Downlight	•	•	•	•
Pinhole Downlight	•	•	•	•
Adjustable Accent		•	•	•
Adjustable Baffle		•	•	•
Adjustable Slot Pinhole	•	•	•	•
Wall Wash		•	•	•
1800K-3000K Warm Dim Option		•	•	•
Wood Ceiling Option		•	•	•
Trimless Option	•	•	•	•
Best for:	clean, modern, minamalist ceilings	accents with higher lumen packages	general uniform lighting	large spaces with high ceilings



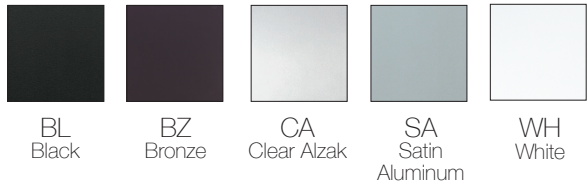
Specification Grade

Die cast and stamped steel construction along with extruded heatsinks with optimized thermal management for exceptional durability and long service life are just some of the advantages of acrobat LED downlights.

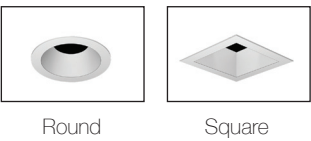
- ✓ Field replaceable LED light engines are available in 2700K, 3000K, 3500K, or 4000K at 90 CRI with 2 SDCM binning.
- ✓ Field replaceable optics available in spot, narrow flood, flood, or wide flood.
- ✓ Multiple dimming driver options
- ✓ Title 24 and JA8 listed
- ✓ Quality cast aluminum trims
- ✓ Emergency Option: Remote inverter operates for 90 minutes with remote test switch available, requires above ceiling access.



STANDARD FINISHES



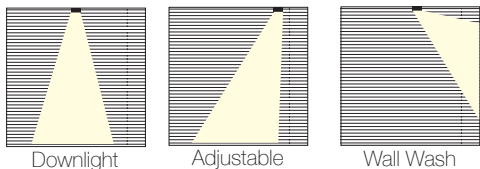
ALL TRIMS AVAILABLE IN



OPTIONAL LENSES & ACCESSORIES



LIGHTING APPLICATIONS



BEAM SPREADS

